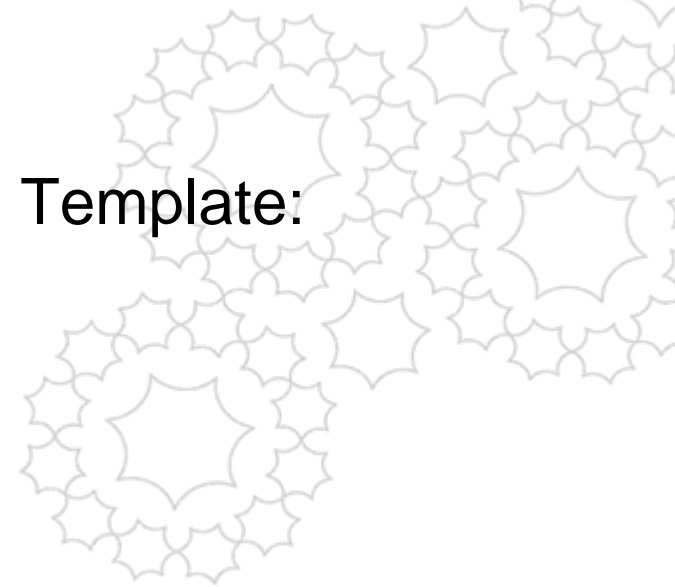


# How to Use the Pearl Buildings Rating System Template: A Summary for Pearl Qualified Professionals (PQP)



Part 1 of this user guide takes you through the process of downloading, completing and submitting the Pearl Rating System Template

# Summary for Pearl Qualified Professionals (PQP)

This User Guide is to be read in parallel with the supporting Rating System Guide

This section aligns with the Pearl Rating Process Step 2 to Step DR5

*(This is also applicable for Step CR4 & Step CR5)*



# Downloading the Template

The Pearl Buildings Rating System Submittal Template can be downloaded from the [Estidama](#) website.

It can be found within the [Building](#) section of the Pearl Rating System

On the website, *Right click*: “Save As...” and save the template zip file in your chosen location

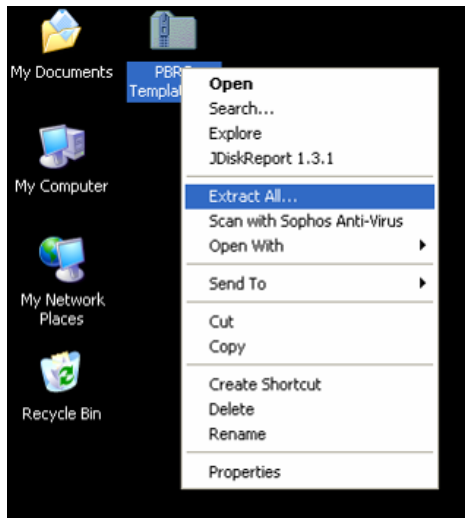


The screenshot displays the Estidama website interface. At the top, there is a navigation bar with the Estidama logo and the text 'Home | Contact Us | English'. Below this, a green banner reads 'Home > Pearl Rating System > Building'. The main content area is divided into a left sidebar and a central column. The sidebar contains a menu with items like 'Home', 'The Philosophy of Estidama', 'The Need for Estidama', 'The Driving Force of Plan Abu Dhabi 2030', 'The Estidama Integrative Design Process', 'Pearl Rating System', 'Community', 'Building', 'Tools', 'Pearl Rating System Process', 'Pearl Rating System Categories', and 'FAQs'. The central column features a large image of three white spheres, followed by a 'Building' section with bullet points: 'Applies to all new buildings. Specific criteria is given for commercial office, retail, multi-family residential and schools.', 'Designed to encourage water, energy and waste minimization.', 'Encourages local material use and improvement of sustainable material supply chain.', and 'Aligned with the Abu Dhabi Development Code and the Building Code.' Below this, there are three document icons with download links: 'Pearl Building Rating System Document', 'Building Water Calculator', and 'Pearl Building Rating System Scorecard'. A right-click context menu is open over the first document icon, showing options: 'Open', 'Open in New Window', 'Save Target As...', 'Print Target', 'Cut', 'Copy', 'Copy Shortcut', and 'Paste'. On the right side of the page, there are logos for 'abudhabi government portal' and 'ESTIDAMA FAREEJ Design Center'.

# Extracting the Submittal File Structure

The downloaded file is a compressed archive containing the submittal template information – to access it you will need to extract the files and structure

Select the downloaded document, *right click*: “Extract All...” to access the archived files using the Extraction Wizard



This will create the “Template” folder in your chosen location. Within this is the “Document Archive” containing the credit template folders and submittal template Excel file

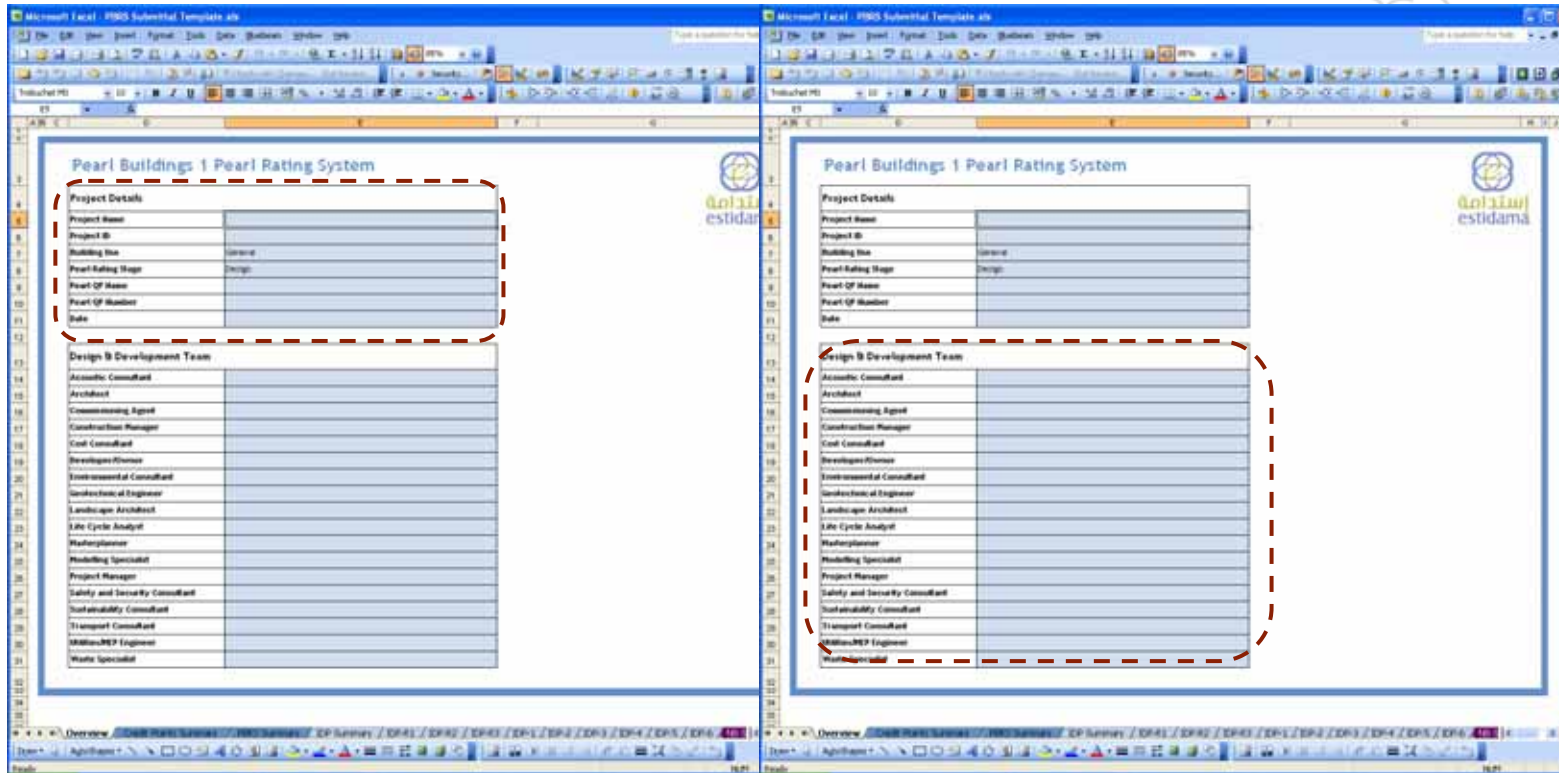
Please note that the credit template folders will not appear directly within the archive but can be accessed via the “Submittal Template” Excel file

# Project and Design & Development Team Details

Begin by opening the Excel file: [PBRs Submittal Template.xls](#)

On the "Overview" tab enter the "Project Details" in the first set of **blue** boxes

Then enter the details of the "Design & Development Team" in the second set of **blue** boxes  
(note: not all projects will have every team member)



*Note: only **blue** cells have contents that can be edited, all other cells are locked and protected to ensure ease of use.*

# Project and Design & Development Team Details

This information will then populate the rest of the Submittal Template, notably on the “PBRBS Summary” tab and within the “Responsible Party” dropdowns (these will be covered in more detail subsequently)

### Pearl Building Rating System

**Project Summary**

<b>Project Name</b>	Example Estidama Project
<b>Project ID</b>	123-456-7890
<b>Building Use</b>	General
<b>Pearl Rating Stage</b>	Design
<b>Pearl QP Name</b>	John Smith
<b>Pearl QP Number</b>	098-765-4321
<b>Date</b>	40345

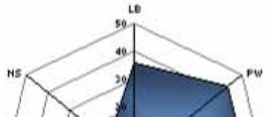

Pearl Rating Levels	
Total Credit Points	Pearl Rating
Required credits only	1
60	2
85	3
115	4
140	5

**Credit Section**

<b>IDP - Integrated Development</b>
<b>NS - Natural Systems</b>
<b>LB - Livable Buildings</b>
<b>PW - Precious Water</b>
<b>RE - Resourceful Energy</b>
<b>SM - Stewarding Materials</b>
<b>IP - Innovating Practice</b>

Design Pearl Rating

Construction Pearl Rating

### Responsible Party

<b>Architect:</b> Mr B
<b>Commissioning Agent:</b> Mr C
<b>Construction Manager:</b> Mr D
<b>Cost Consultant:</b> Mr E
<b>Developer/Owner:</b> Mr F
<b>Environmental Consultant:</b> Mr G
<b>Geotechnical Engineer:</b> Mr H
<b>Landscape Architect:</b> Mr I

# Credit Points Summary

The “Credit Points Summary” tab contains an overview of each requirement and credit within the seven categories.

*Note: this tab cannot be edited directly, it is updated by making changes on the individual credit tabs*

Pearl Building Rating System				
Credit Points Summary				
Credit Reference	Credit Title	Credit Points Available	Design	Construction
<b>IDP</b>				
<b>Integrated Development Process</b>				
IDP-R1	Integrated Development Strategy	Required	No	No
IDP-R2	Tenant Fit-Out Design & Construction Guide	Required	n/a	No
IDP-R3	Basic Commissioning	Required	No	No
IDP-1	Life Cycle Coating	4	0	0
IDP-2	Guest Worker Accommodation	2	0	0
IDP-3	Construction Environmental Management	2	0	0
IDP-4	Building Envelope Verification	1	0	0
IDP-5	Re-Commissioning	2	0	0
IDP-6	Sustainability Communication	2	0	0
<b>TOTAL</b>		<b>13</b>	<b>0</b>	<b>0</b>
<b>HS</b>				
<b>Natural Systems</b>				
NS-R1	Natural Systems Assessment	Required	No	n/a
NS-R2	Natural Systems Protection	Required	No	No
NS-R3	Natural Systems Design & Management Strategy	Required	No	No
NS-1	Reuse of Land	2	0	0
NS-2	Remediation of Contaminated Land	2	0	0
NS-3	Ecological Enhancement	2	0	0
NS-4	Habitat Creation & Restoration	6	0	0
<b>TOTAL</b>		<b>12</b>	<b>0</b>	<b>0</b>
<b>LBo</b>				
<b>Livable Buildings - Outdoors</b>				
LBo-R1	Plan 2030	Required	No	n/a
LBo-R2	Urban Systems Assessment	Required	No	n/a

*This will allow comparison of the credits achieved at Design and Construction stages with the total available*



# PBRS Summary Tab

The "PBRS Summary" provides a single page snapshot overview of the project performance comparing the number of points achieved at each submission stage with those available as well as summarising the overall Pearl Rating Achieved

*Note: this tab is automatically updated as you make changes to the individual credit tabs*





# Categories and Credits

The subsequent tabs are split into seven colour-coded sections, one for each of the categories. Each category has a “Summary” tab followed by tabs for each individual credit.

[IDP Summary](#) / [IDP-R1](#) / [IDP-R2](#) / [IDP-R3](#) / [IDP-1](#) / [IDP-2](#) / [IDP-3](#) / [IDP-4](#)


The “Summary” tab is populated with the Project Details previously entered as well as having a list of each credit and the credit points achieved.

*Note: this tab is automatically updated as you make changes to the individual credit tabs*

**Pearl Rating System for Estidama**

IDP - Integrated Development Process

[Report a Bug on this Page : ESL\\_template@ucp.ae](#)



استدامة  
estidama

Project Name	Example Estidama Project
Project ID	ED-456-7890
Pearl Rating System	Building
Pearl Rating Stage	Design
Building Use	General
Pearl QP Name	John Smith
Pearl QP Number	090-765-4321
Date	16/06/2016

Credit Reference	Credit Title	Credit Points Available	Design Rating - Credit Points Achieved	Construction Rating - Credit Points Achieved
DP-R1	Integrated Development Strategy	Required	No	No
DP-R2	Tenant Fit-Out Design & Construction Guide	n/a	n/a	No
DP-R3	Basic Commissioning	Required	No	No
DP-1	Life Cycle Costing	4	0	0
DP-2	Guest Visitor Accommodation	2	0	0
DP-3	Construction Environment Management	2	0	0
DP-4	Building Envelope Ventilation	1	0	0
DP-5	Fit-Commissioning	2	0	0
DP-6	Sustainability Communication	2	0	0

**Total**      13      Required Credit Not Achieved      Required Credit Not Achieved

# Individual Credit Tabs

These tabs are where the main data entry takes place. Within each tab you can do the following:


1. Assign "Responsible Party" for each credit based upon the Design Team data previously entered

**Pearl Rating System for Estidama**

**IDP-R1: Integrated Development Strategy**

**Design**

Report a Bug on this Page : [ERRS\\_template@ddp.gov.ae](mailto:ERRS_template@ddp.gov.ae)



Submission Requirements	Achieved & Submitted?	Document Title and Revision / Drawing Number, Title and Revision	Responsible Party
Process chart for the IDP developed at project inception, detailing: <ul style="list-style-type: none"> <li>- Team structure listing team members and their roles</li> <li>- Design milestones and work shops listing participants, goals, expected outcomes, required actions with task assignments</li> <li>- Methodology for ensuring appropriate stakeholders are involved, including construction team, commissioning agent, potential tenants, building operators and relevant regulatory authorities and permit agencies</li> </ul>	No		Developer/Owner: Fred Flintstone, Bedrock
Narrative summarizing initial vision, objectives and targets set jointly by the project team for the project	No		Architect: Bilbo Baggins, BB & Partners Architects
Implementation strategy for achieving transition between project stages and project packages	No		Masterplanner: King Kong, NYC Redevelopment Ltd
Meeting minutes, action items and team member responsibilities from key workshops held as part of the IDP	No		Architect: Bilbo Baggins, BB & Partners Architects
Narrative highlighting the reasons for any changes from the initial IDP process chart	No		
<b>Required credit achieved?</b>	<b>No</b>		
<a href="#">Access Template Folder</a>			

Architect: Mr B  
 Commissioning Agent: Mr C  
 Construction Manager: Mr D  
 Cost Consultant: Mr E  
 Developer/Owner: Mr F  
 Environmental Consultant: Mr G  
 Geotechnical Engineer: Mr H  
 Landscape Architect: Mr I

**Construction**

Submission Requirements	Achieved & Submitted?	Document Title and Revision / Drawing Number, Title and Revision	Responsible Party
Narrative showing an updated process chart of the IDP highlighting changes from the design stage and listing processes and challenges during construction stage	No		
Updated implementation strategy	No		
<b>Required credit achieved?</b>	<b>No</b>		
<a href="#">Access Template Folder</a>			

# Individual Credit Tabs cont.

These tabs are where the main data entry takes place. Within each tab you can do the following:


2. Summarise the key documentation provided for each element of the credit at Design and Construction submissions

**Pearl Rating System for Estidama**

**IDP-R1: Integrated Development Strategy**

**Design**

Report a Bug on this Page : [PBRS\\_template@upc.gov.ae](mailto:PBRS_template@upc.gov.ae)



Submission Requirements	Achieved & Submitted?	Document Title and Revision / Drawing Number, Title and Revision	Responsible Party
Process chart for the IDP developed at project inception, detailing: - Team structure listing team members and their roles - Design milestones and workshops listing participants, goals, expected outcomes, required actions with tasks assignments - Methodology for ensuring appropriate stakeholders are involved, including construction team, commissioning agent, potential tenants, building operators and relevant regulatory authorities and permit agencies	No	100620 - Process Chart - Rev03.doc	Developer/Owner: Mr F
Narrative summarizing initial vision, objectives and targets set jointly by the project team for the project	No	100622 - V&D Narrative - Rev01.doc	Architect: Mr B
Implementation strategy for achieving transition between project stages and project packages	No	100620 - Transition Notes.note	Masterplanner: Mr K
Meeting minutes, action items and team member responsibilities from key workshops held as part of the IDP	No	100618-Minutes.doc, 100622-Minutes.doc, 100626Minutes.doc, 100630-Minutes.doc,	Architect: Mr B
Narrative highlighting the reasons for any changes from the initial IDP process chart	No	n/a	Architect: Mr B
<b>Required credit achieved?</b>	<b>No</b>		
<a href="#">Access Template Folder</a>			

**Construction**

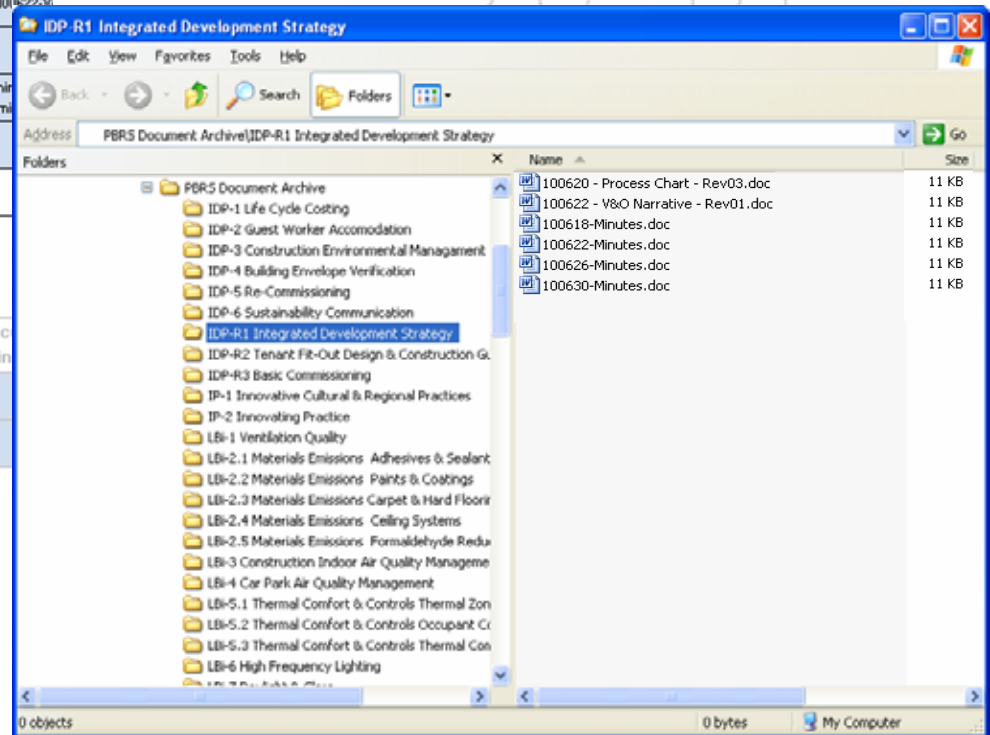
Submission Requirements	Achieved & Submitted?	Document Title and Revision / Drawing Number, Title and Revision	Responsible Party
Narrative showing an updated process chart of the IDP highlighting changes from the design stage and listing successes and challenges during construction stage	No		

# Individual Credit Tabs cont.

These tabs are where the main data entry takes place. Within each tab you can do the following:

3. Save "Credit Documentation" to the "Template Folder" (note, clicking on the link within the credit tab will open the folder relevant to that specific credit)

Narrative summarizing initial vision, objectives and targets set jointly by the project team for the project	No	100622-V
Implementation strategy for achieving transition between project stages and project packages	No	
Meeting minutes, action items and team member responsibilities from key workshops held as part of the IDP	No	100618-min
Narrative highlighting the reasons for any changes from the initial IDP process chart	No	
<b>Required credit achieved?</b>	<b>No</b>	
<a href="#">Access Template Folder</a>		
<a href="#">Save Credit Documentation Here</a>		
<b>Submission Requirements</b>	<b>Achieved &amp; Submitted?</b>	<b>Doc Drawin</b>
Narrative showing an updated process chart of the IDP highlighting changes from the design stage and listing successes and challenges during construction stage	No	
Updated implementation strategy	No	
Required credit achieved?	No	



# Individual Credit Tabs cont.

These tabs are where the main data entry takes place. Within each tab you can do the following:


4. Confirm that required information has been provided and that the credit is achieved

**Pearl Rating System for Estidama**

**IDP-R1: Integrated Development Strategy**

**Design**

Report a Bug on this Page : [PIRS\\_template@ucp.gov.ae](mailto:PIRS_template@ucp.gov.ae)



Submission Requirements	Achieved & Submitted?	Document Title and Revision / Drawing Number, Title and Revision	Responsible Party
Process chart for the IDP developed at project inception, detailing: - Team structure listing team members and their roles - Design milestones and workshops listing participants, goals, expected outcomes, required actions with tasks assignments - Methodology for ensuring appropriate stakeholders are involved, including construction team, commissioning agent, potential tenants, building operators and relevant regulatory authorities and permit agencies	Yes	100620 - Process Chart - Rev03.doc	Developer/Owner: Mr F
Narrative summarizing initial vision, objectives and targets set jointly by the project team for the project	Yes	100622 - V&O Narrative - Rev01.doc	Architect: Mr B
Implementation strategy for achieving transition between project stages and project packages	Yes	100620 - Transition Notes.note	Masterplanner: Mr K
Meeting minutes, action items and team member responsibilities from key workshops held as part of the IDP	Yes	100618 - Minutes.doc, 100622 - Minutes.doc, 100626 - Minutes.doc, 100630 - Minutes.doc,	Architect: Mr D
Narrative highlighting the reasons for any changes from the initial IDP process chart	No	n/a	Architect: Mr B
<b>Required credit achieved?</b>	Yes		
<a href="#">Access Template Folder</a>			

Submission Requirements	Achieved & Submitted?	Document Title and Revision / Drawing Number, Title and Revision	Responsible Party
Narrative showing an updated process chart of the IDP highlighting changes from the design stage and listing successes and challenges during construction stage	No		
Updated implementation strategy	No		
<b>Required credit achieved?</b>	No		
<a href="#">Access Template Folder</a>			

# Closing the Loop

Once the required information has been collated and the "Credit" tab updated then the "Required Credit Achieved" box and the information on the "Category Summary" and "PBRBS Summary" tabs will update automatically

### Pearl Rating System for Estidama

#### IDP-R1: Integrated Development Strategy

##### Design

Submission Requirements	Achieved & Submitted?	Docu Drawing
Process chart for the IDP developed at project inception, detailing: - Team structure listing team members and their roles - Design milestones and work stops listing participants, goals, expected outcomes, required actions with task assignments - Methodology for ensuring appropriate stakeholders are involved, including construction team, commissioning agent, general tenants, building operators and relevant regulatory authorities and permit agencies	Yes	80
Narrative summarizing initial vision, objectives and targets set jointly by the project team for the project	Yes	100
Implementation strategy for achieving transition between project stages and project packages	Yes	1
Meeting minutes, action items and team member responsibilities from key workshops held as part of the IDP	Yes	XXXX min min
Executive table listing the milestones for each phase from the IDP/IDP process chart	Yes	
<b>Required credit achieved!</b>	Yes	

[Access Template Folder](#)

##### Construction

Submission Requirements	Achieved & Submitted?	Docu Drawing
Operative drawing to address construction or an IDP programming in accordance to design stage and being submitted and validated, listing construction stage	No	
Minimum performance energy	No	
<b>Required credit achieved!</b>	No	

[Access Template Folder](#)

### Pearl Rating System for Estidama

#### IDP - Integrated Development Process

Project Name	Example Estidama Project
Project ID	023-456-7890
Pearl Rating System	Building
Pearl Rating Stage	Design
Building Use	General
Pearl IDP Name	John Smith
Pearl IDP Number	0000-700-4101
Date	2016/01/01

Credit Reference	Credit Title	Credit Points Available	Design Rating - Credit Points Achieved	Construction Rating - Credit Points Achieved
IP-R1	Integrated Development Strategy	Required	Yes	No
IP-R2	Tenant Fit-Out Design & Construction Guide	n/a	n/a	No
IP-R3	Basic Commissioning			
IP-1	Life Cycle Costing			
IP-2	Guest Worker Accommodation			
IP-3	Construction Environmental Management			
IP-4	Building Envelope Verification			
IP-5	Pre-Commissioning			
IP-6	Sustainability Consultation			

### Pearl Building Rating System

#### Credit Points Summary

Credit Reference	Credit Title	Credit Points Available	Design	Construction
IP	Integrated Development Process			
IP-R1	Integrated Development Strategy	Required	Yes	No
IP-R2	Tenant Fit-Out Design & Construction Guide	Required	n/a	No
IP-R3	Basic Commissioning	Required	No	No
IP-1	Life Cycle Costing	4	0	0
IP-2	Guest Worker Accommodation	2	0	0
IP-3	Construction Environmental Management	2	0	0
IP-4	Building Envelope Verification	1	0	0
IP-5	Pre-Commissioning	2	0	0
IP-6	Sustainability Consultation	2	0	0
<b>TOTAL</b>		<b>13</b>	<b>0</b>	<b>0</b>



# Continuing the Process

Data can be entered into all/any of the “Credit” tabs as part of the Design and Development Process. Documentation can be saved into the “Template Folders” as and when it is available. The completion of the templates is intended to take place as an iterative activity as the design stage is carried out, giving an evolving picture of the project performance.

### Pearl Building Rating System

Credit Points Summary

Report a Template Bug: [PDR\\_scorecard@pbc.gov.ae](#)

#### Pearl Building Rating System

**Project Summary**

Project Name	Example Etihadra Project
Project ID	023-456-7890
Building Use	General
Pearl Rating Stage	Design
Pearl QP Name	John Smith
Pearl QP Number	030-765-4321
Date	4/2/15

**Pearl Rating Levels**

Total Credit Points	Pearl Rating
Required credit only	1
60	2
65	3
85	4
100	5

Credit Section	Credit Points Available	Design Credit Points	Construction Credit Points
IDP - Integrated Development Process	32	32	0
NS - Natural Systems	10	8	0
LB - Livable Buildings	36	29	0
PW - Precious Water	42	34	0
RE - Resourceful Energy	44	25	0
SM - Stewardship Materials	28	23	0
IP - Innovating Practices	2	1	0
<b>Total</b>	<b>120</b>	<b>120</b>	<b>0</b>

**Design Pearl Rating** 4

Construction Pearl Rating Unrated

Credit Reference	Credit Title	Credit Points Available	Design	Construction
<b>IDP - Integrated Development Process</b>				
IDP-R1	Integrated Development Strategy	Required	Yes	No
IDP-R2	Tenant Fit-Out Design & Construction Guide	Required	Yes	No
IDP-R3	Basic Commissioning	Required	Yes	No
IDP-1	Life Cycle Costing	4	4	0
IDP-2	Guest Worker Accommodation	2	2	0
IDP-3	Construction Environmental Management	2	2	0
IDP-4	Building Envelope Ventilation	1	1	0
IDP-5	Fit-Commissioning	2	2	0
IDP-6	Sustainability Communication	2	1	0
<b>TOTAL</b>		<b>19</b>	<b>12</b>	<b>0</b>
<b>NS - Natural Systems</b>				
NS-P1	Natural Systems Assessment	Required	Yes	No
NS-P2	Natural Systems Protection	Required	0	No
NS-R3	Natural Systems Design & Management Strategy	Required	2	No
NS-1	Reuse of Land	2	2	0
NS-2	Remediation of Contaminated Land	2	2	0
NS-3	Ecological Enhancement	2	2	0
NS-4	Habitat Creation & Restoration	6	2	0
<b>TOTAL</b>		<b>12</b>	<b>8</b>	<b>0</b>
<b>LB - Livable Buildings - Outdoors</b>				
LB-R1	Plan 2030	Required	Yes	No
LB-R2	Urban Systems Assessment	Required	Yes	No
LB-R3	Outdoor Thermal Comfort Strategy	Required	Yes	No
LB-1	Improved Outdoor Thermal Comfort	2	2	0
LB-2	Pearl Rated Communities	1	1	0
LB-3	Accessible Community Facilities	1	1	0
LB-4	Active Urban Environments	1	1	0
LB-5	Private Outdoor Space	N/A	0	0
LB-6	Public Transport	3	2	0
LB-7	Bicycle Facilities	2	1	0
LB-8	Preferred Car Parking Spaces	1	1	0
LB-9	Travel Plan	1	0	0
LB-10	Light Pollution Reduction	1	1	0

Legend: ■ Points Available ■ Design Points ■ Construction Points

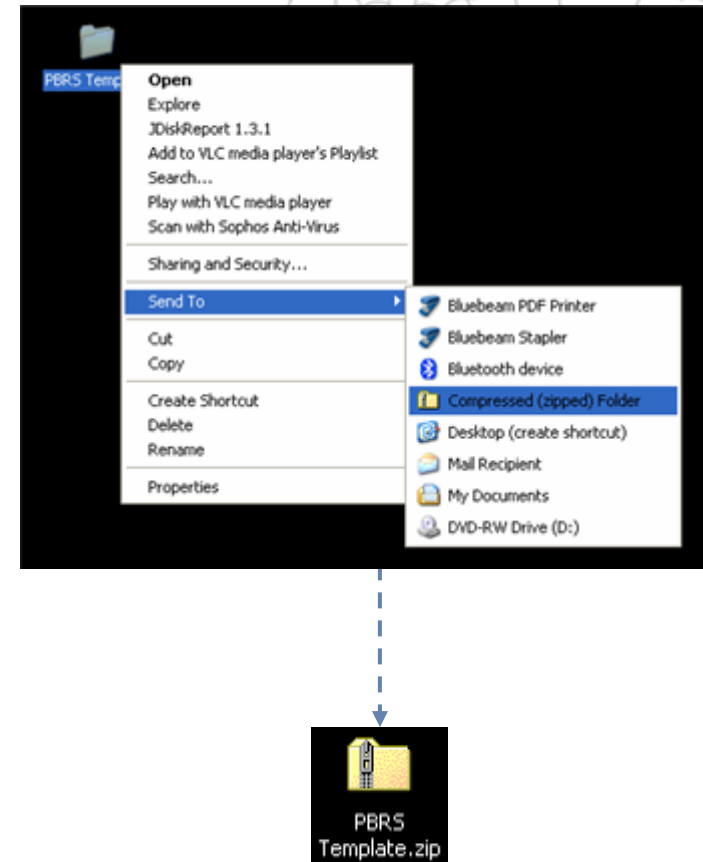
Series: "Design Points" Point "PW"

Legend: ■ Points Available ■ Design Points ■ Construction Points

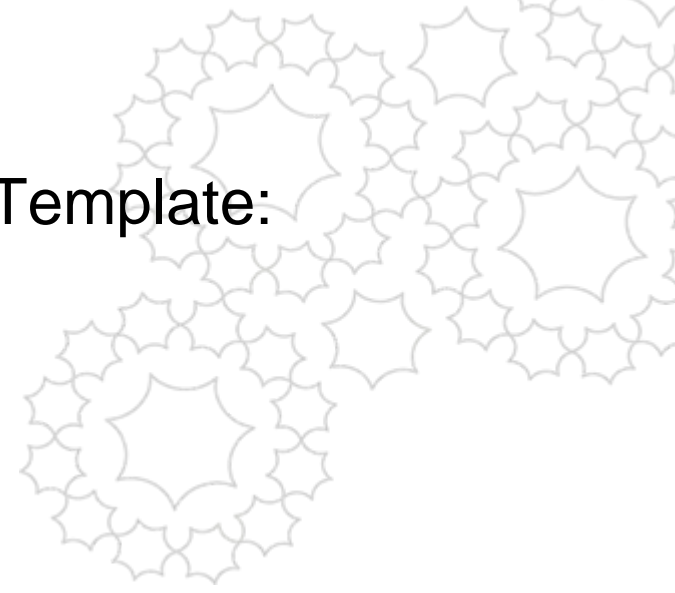
# Submittal for Assessment

On the completion of the Design stage the *Design Pearl Rating Submission* should be undertaken. The templates and documentation can be provided to the UPC in a simple manner by undertaking the following steps:

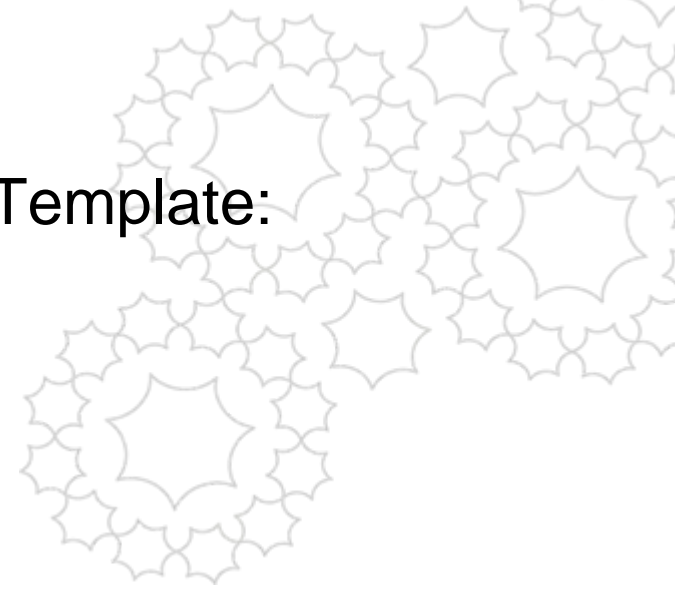
1. Ensure that all credits you wish to apply for are complete and that the required documentation is within the specified folders
2. Save and close all files and folders
3. From the desktop select the "PBRs Submittal" folder, *Right click*: "Send To" – "Compressed (zipped) Folder" to archive all the submittal information
4. The resultant single file ("PBRs Submittal Structure.zip") can now be submitted to the Pearl Assessor (PA) at the UPC
5. Feedback should be received leading to Achievement of the Design Pearl Rating through submission of the final completed template (see Part 2 of this user guide)
6. Work can begin on the Construction Stage



# How to Use the Pearl Building Rating System Template: A Summary for Pearl Qualified Professionals (PQP)



# How to Use the Pearl Building Rating System Template: A Summary for Pearl Qualified Professionals (PQP)



Part 2 of this user guide outlines the feedback process following Review by the Pearl Assessor (PA)

# Summary for Pearl Qualified Professionals (PQP)

This User Guide is to be read in parallel with the supporting Rating System Guide

This section aligns with the Pearl Rating Process Step DR6 & Step DR7

*(This is also applicable for Step CR6 & Step CR7)*



# Feedback format

Following the “Review by Assessor” the PA will return a PDF containing the “Credit Points Summary” information to the project PQP

Within this document you will now find two additional columns containing the “Assessor Comments” and “Revised Credit Total”. These two sets of information form the main body of feedback

Pearl Building Rating System					 Report a Template Bug : <a href="mailto:PBS_scorecard@upc.gov.ae">PBS_scorecard@upc.gov.ae</a>	
Credit Points Summary						
Credit Reference	Credit Title	Credit Points Available	Design	Construction	Assessor Comments	Revised Credit Total
IDP	Integrated Development Process					
IDP-R1	Integrated Development Strategy	Required	Yes	No		
IDP-R2	Tenant Fit-Out Design & Construction Guide	Required	Yes	No		
IDP-R3	Basic Commissioning	Required	Yes	No		
IDP-1	Life Cycle Costing	4	4	0		
IDP-2	Guest Worker Accommodation	2	2	0		
IDP-3	Construction Environmental Management	2	2	0		
IDP-4	Building Envelope Verification	1	1	0		
IDP-5	Re-Commissioning	2	2	0		
IDP-6	Sustainability Communication	2	1	0		
<b>TOTAL</b>		<b>13</b>	<b>12</b>	<b>0</b>		

Assessor Comments	Revised Credit Total
please outline changes made from previous revisions	No
no comment	Yes
further information required	No
clarification required...	2
no comment	2
no comment	2
comment on ...	0
no comment	2
	1
<b>Required Credit Not Achieved</b>	



# Final Submission

From the comments made it should be clear what is necessary to finalise the Design submission.

Once the required information has been collated the final Design Pearl Rating submission of the completed template can be made.

Once agreement is reached between the PA, PQP and Design team the Design Pearl Rating can be awarded

# How to Use the Pearl Buildings Rating System Template: A Summary for Pearl Qualified Professionals (PQP)

